

ENDURANCE®

Creators of Solid, Secure & Stylish Doors



INSTALLING A PULL KNOB USING A SECRET FIXING KIT

YOU WILL NEED:

- PULL KNOB
- 15mm DRILL BIT + DRILL
- 3mm + 8mm HEX KEY
- SECRET FIXING KIT



1 - Mark a hole to be drilled onto the slab using a pencil.

2 – Using a 15mm drill bit – Rout into the slab a depth of 16mm to accommodate the self-tapping plug.

(Taking extra care not to damage the slab whilst drilling)

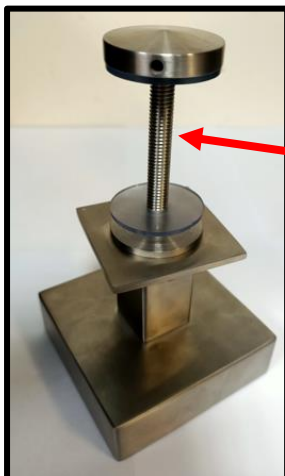


2 – DRILLING INTO SLAB

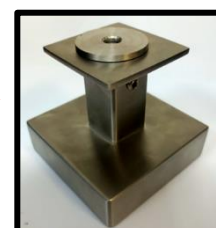
3 – Using an 8mm Hex key (Allen key) insert and tighten the _____ until it sits flush with the door slab.



3 – INSERTING BRACKET INTO SLAB



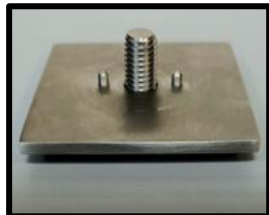
4 - Remove the bolt through bracket from the Pull knob by unscrewing the "bolt through" bolt and ensure you have the below before refitting using the secret fixing kit:



5 – Screw the bolt from the secret fixing kit into the self-tapping plug already screwed into the slab.



6 – Once tightened place the circular washer first, followed by the square plate:



And then the Pull Knob itself – Once in place, screw the pull knob until it has tightened and aligned to the customers preference.

8 – Tighten the 2 grub screws located on either side of the knob with a 3mm hex key until there is no movement within the pull knob.



You should now have a secure and faced fixed pull knob.